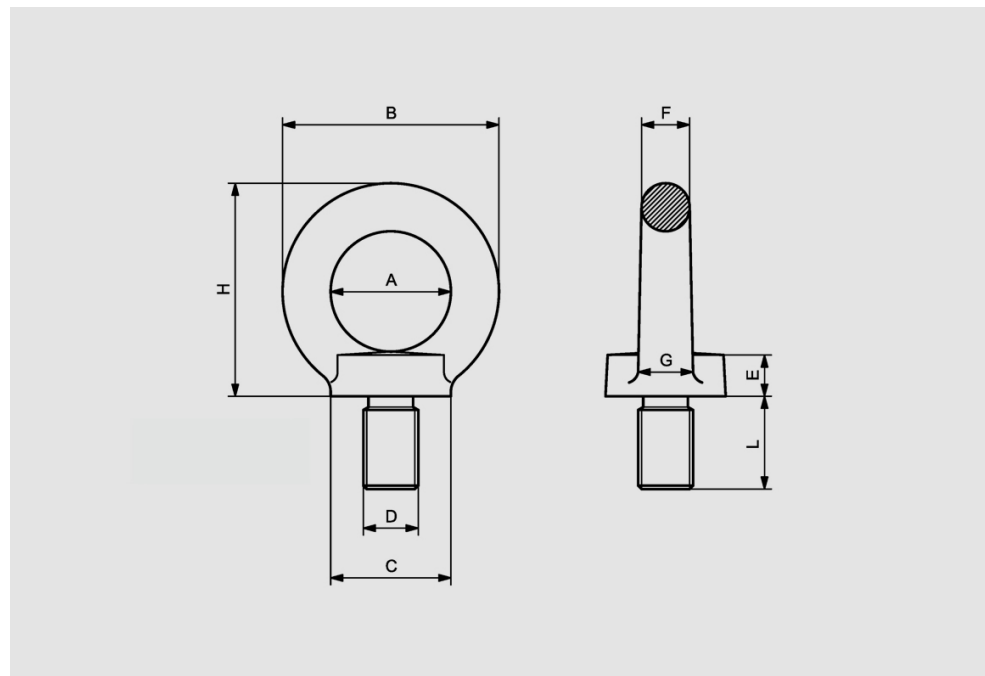










**GOLFARE ORIENTABILE CON VITE 8.8 / EYEBOLT WITH SCREW 8.8**

GOLFARE ORIENTABILE CON VITE 8.8 EYE BOLT WITH SCREW 8.8						
Misura Size	A	B	C	F	H	Peso Weight
D x L (mm)	mm	mm	mm	mm	mm	kg
M6x15	25	45	25	10	45	0,090
M8x15	25	45	25	10	45	0,113
M10x16	25	45	25	10	45	0,135
M12x22	35	63	35	14	62	0,270
M14x20	35	63	35	14	62	0,290
M16x29	35	63	35	14	62	0,310
M20x32	50	90	50	20	90	0,860
M24x40	50	90	50	20	90	0,900
M30x45	60	108	65	24	109	1,700



GOLFARE ORIENTABILE CON VITE 8.8 / EYEBOLT WITH SCREW 8.8

CABLES\_012021

LIMITI CARICO DI LAVORO WORKING LOAD LIMIT W.L.L (T)									
									
Misura Size	0°	0°	90°	90°	0°-45°	45°-60°	0°-45°	45°-60°	Coppia max di serraggio Max tightening couple
	1 braccio Single leg	2 bracci 2 legs	1 braccio Single leg	2 bracci 2 legs	2 bracci 2 legs		3/4 bracci 3/4 legs		(Nm)
M6x15	0,4	0,8	0,1	0,2	0,14	0,1	0,2	0,14	3,5
M8x15	0,8	1,6	0,2	0,4	0,28	0,2	0,4	0,28	8
M10x16	1	2	0,25	0,5	0,35	0,25	0,5	0,35	16
M12x22	1,6	3,2	0,4	0,8	0,56	0,4	0,8	0,56	28
M14x20	3	6	0,75	1,5	1	0,75	1,5	1	45
M16x29	4	8	1	2	1,4	1	2	1,4	70
M20x32	6	12	1,5	3	2,1	1,5	3	2,1	135
M24x40	8	16	2	4	2,8	2	4	2,8	230
M30x45	12	24	3	6	4,2	3	6	4,2	465